



**Nathaniel Smith, Manager Safety, Training & Compliance (right) teaching his son Zachary Smith, pre-apprentice graduate, proper and safe climbing technique.**

## Thank You Lineworkers

**O**n April 8, we celebrate Lineworker Appreciation Day to honor the men and women at Choptank Electric Cooperative who power life! Rain or shine, day or night, our lineworkers brave challenging conditions to make sure we have electricity when needed.

Lineworkers are ranked as one of the 10 most dangerous jobs in the country. From learning the intricacies of the electric grid to climbing utility poles carrying 40+ pounds of equipment, lineworkers spend thousands of hours training and learning throughout their career. Their dedication is nothing short of extraordinary and a testament to their commitment to powering local families.

Choptank Electric Cooperative and its employees are members of this community. We live in the same neighborhoods. We shop at the same stores. Our kids go to the same schools. If your lights are off, there is a good chance ours are off too. You can trust that we are doing our best to get the lights back on as quickly and safely as possible, so you can get back to normal life. Join me in thanking a lineworker today and every day.



**Mike Malandro**  
*President & CEO*  
*Choptank Electric Cooperative*



**Choptank Electric Cooperative**

A Touchstone Energy® Cooperative

**Choptank**  
*Fiber*

P.O. Box 430 | Denton, MD | 21629

Member Service Center: 1-877-892-0001

Automated Member Service: 1-866-999-4574

Electric Outage Reporting: 1-800-410-4790 option 1

Fiber Outage Reporting: 1-800-410-4790 option 2

Use SmartHub to Manage Account,  
Track Usage and Report Outages —>





# The journey of electricity begins at power plants

By Katie Luckett, Manager of Marketing, Communications and Education

**P**ower plants can be thought of as factories that make electricity using various energy sources, like natural gas, solar, wind and nuclear energy. Across the U.S., more than 11,000 power plants deliver electricity to the grid.

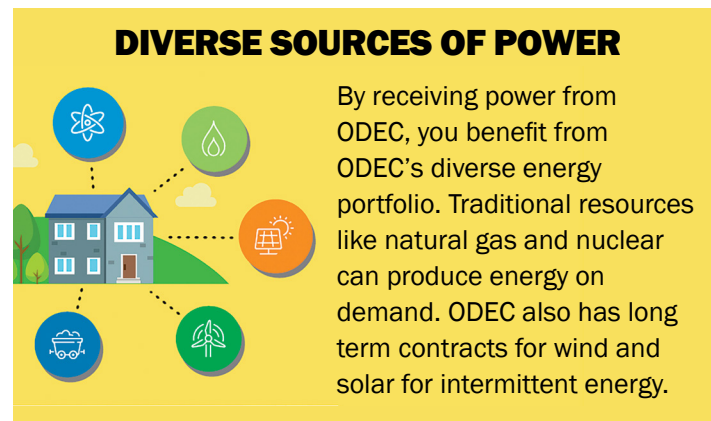
Choptank Electric Cooperative receives power from our generation and transmission (G&T) co-op, Old Dominion Electric Cooperative (ODEC). We work closely with ODEC to provide electricity at the lowest cost possible. Being part of a G&T benefits members like you by placing ownership and control in the hands of your co-op, prioritizing affordability and reliability, supporting local economic development and fostering a sense of community.

To get the electricity from power plants to you, we need a transportation system. High-voltage transmission lines act as the

highways for electricity, transporting power over long distances. These lines are supported by massive towers and travel through vast landscapes, connecting power plants to electric substations.

Substations are like pit stops along the highway, where the voltage of electricity is adjusted. They play a crucial role in managing power flow and ensuring that electricity is safe for use in homes and businesses. Once the electricity is reduced to the proper voltage, it travels through distribution power lines, like the ones you typically see on the side of the road. Distribution lines carry electricity

from substations to homes, schools and businesses. Distribution transformers, which look like metal buckets on the tops of power poles or large green boxes on the ground, further reduce the voltage to levels suitable for household appliances

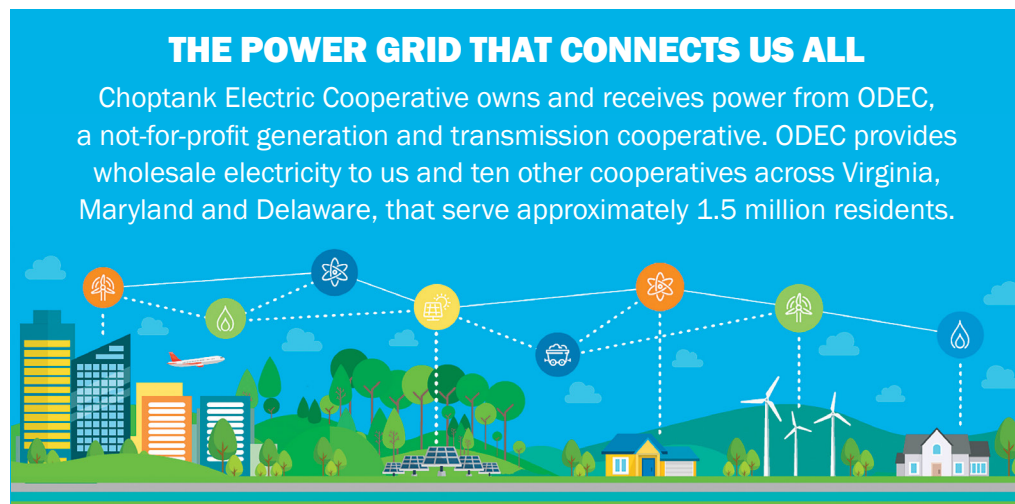


and electronic devices.

After traveling through transformers, electricity reaches you to power everyday life. We're proud to be your local, trusted energy provider. From the time it's created to the

time it's used, electricity travels great distances to be available at the flip of a switch. That's what makes the electric grid our nation's most complex machine and one of the greatest achievements.

Visit > [www.odec.com/generation-transmission](http://www.odec.com/generation-transmission) to learn more about the diversified mix of fuels used to generate the power to your home.



**Our lineworker crews worked hard this winter updating our grid and keeping the lights on. On this particular day, part of our Denton District crew worked in Ridgely to replace an aging cabinet transformer, further strengthening our system.**



## Choptank Welcomes New Employee



**Brian T. Postles**  
Apprentice Lineman, RSC (Salisbury)

**Experience:** 75th Ranger Regiment, USASOC, US Army, Lineman Pre-Apprentice Program, Tesla Energy / Solar City

**Hobbies:** Learning how to build new things, home renovations, outdoor sports and competitions

**Looking Forward To:** Joining and contributing to the community. Learning a lot of new information.

⚡ Congratulations to **Judi White** who completed the Member Service Specialist 6th Class testing and moved to the Member Service Specialist 5th Class!

⚡ Congratulations to **Linnie Vann** who completed the 4th Class Apprentice Lineman testing and moved to Apprentice Lineman 3rd Class!



## CHOPTANK ELECTRIC COOPERATIVE 86TH

# ANNUAL MEETING

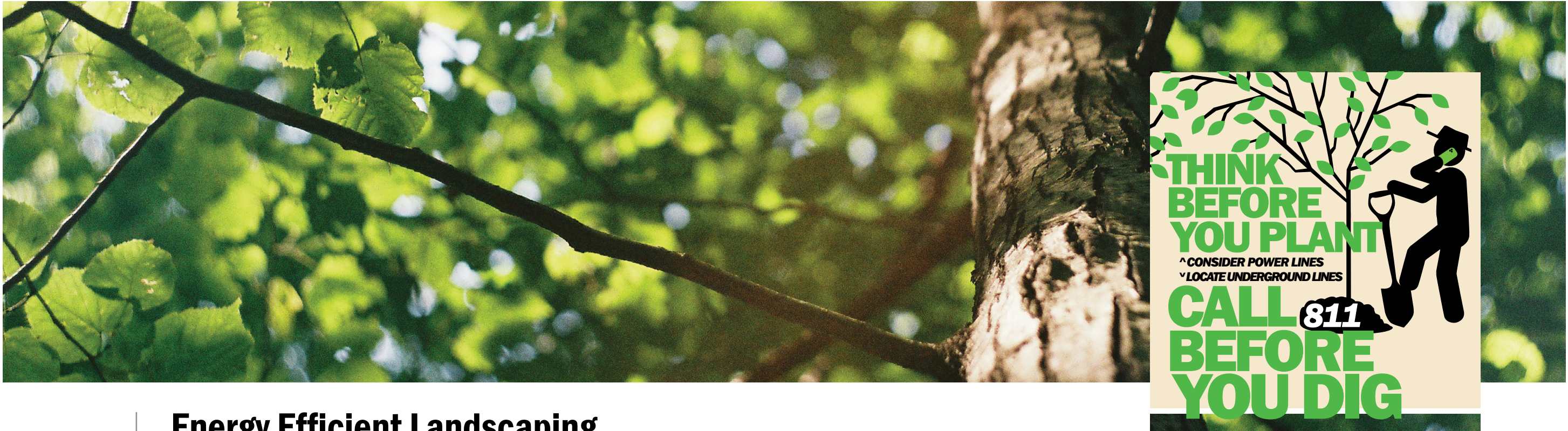
**THE FOUNTAINS WEDDING & CONFERENCE CENTER**  
1800 Sweetbay Drive in Salisbury, Maryland

**THURSDAY, APRIL 25**  
Doors open at 4:30 p.m.  
Business meeting begins at 6 p.m.

Meal and goodies for members who attend

10 Luck of the Draw Scholarships will be handed out!

> [www.choptankelectric.coop/annual-meeting-0](http://www.choptankelectric.coop/annual-meeting-0)



# Energy Efficient Landscaping

By Bobby Schaller, MultiMedia Manager

Enjoy saving money? Do you enjoy welcoming spring and all the growth and green the season brings? Did you know that well-designed landscaping could be your best bet for lowering your power bill? In fact, planting the right trees and shrubs, in the right locations could be the best long term home investment for keeping your heating and cooling usage and costs down. Not to mention improving your home’s aesthetics and gaining environmental benefits from planting more life around you.

With an average return on investment within eight years, a well designed landscape can cut your summer and winter power costs dramatically. It doesn’t matter if you have a large plot, or a small yard, there are many ways to increase energy efficiency by utilizing your

land. You could plant water thrifty grass, build a clothesline or install rain barrels. However, the two biggest ways to save heating and cooling costs are to provide shade in the summer and install windbreaks for your home for the winter.

We live in a temperate climate that closely borders the hot and humid climate of our neighbors to the south. Because of that we experience all four seasons with dry, cold winters and hot, humid summers. The age-old question around here has always been, “how do we stay cooler in the summer and warmer in the winter?”

With summer a few months away, let’s start there. Planting deciduous (leaf shedding) trees with high crowns (i.e., leaves and branches) to the south of your home will block solar heat in

the summer and can reduce the amount of air conditioning that you use dramatically. Also, by shading your air conditioning unit, without restricting its air flow, you will increase it’s efficiency by 10%. Of course, when fall arrives deciduous trees lose their leaves allowing sunlight to warm and light your home on sunny winter days.

To reduce your power cost in the cold winter months, plant evergreen trees and shrubs with low crowns to create windbreaks and block prevailing winter winds. Dense evergreen trees and shrubs planted close together to the north and northwest are the most common type of windbreak and can help lower energy used for home heating. Or, evergreen trees combined with a wall or fence can deflect or lift the wind over the home. For maximum

protection, plant your windbreak at a distance of two to five times the mature height of the tree from your home.

## Think Before You Plant

Trees have a very long lifespan that become more functional and beautiful as they grow. But a poor landscape plan could have a negative effect. An improperly placed tree causes nearly 15% of all outages on our system. Ensure proper placement of trees before you plant!

When you are looking at planting bushes, shrubs, or trees, look up and see if there are any power lines above, or near. Some trees could grow up and interfere with power lines, so instead, think of planting shorter bushes or shrubs near those areas.

## Safety First! Call 811 Before You Dig

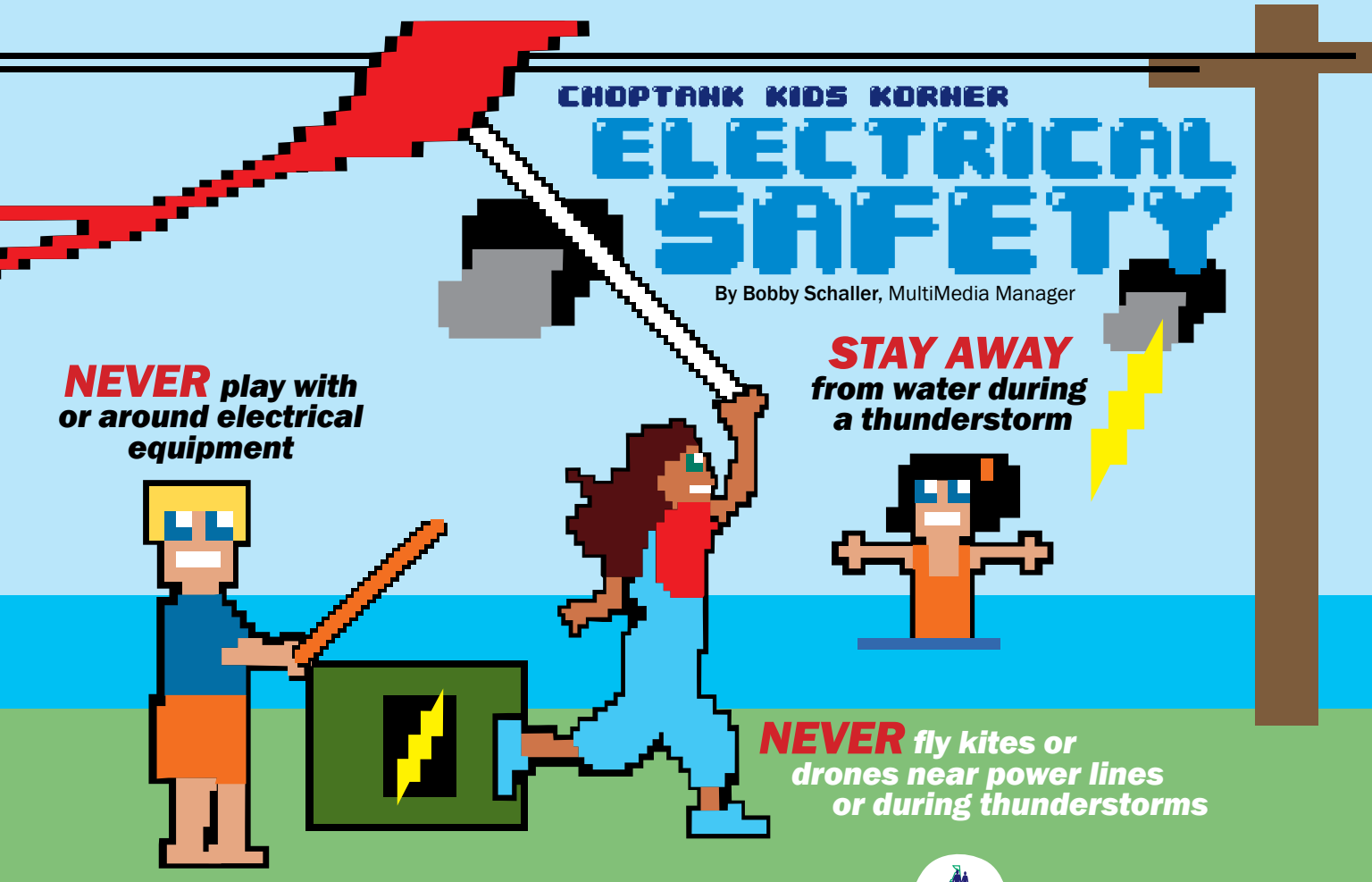
Before you dig, please call 811. It could save your life! By calling 811 before you dig, you are protecting not only your life and those around you but also protecting your property. Whether you are planting a tree or installing a fence or finding a new spot for your mailbox, if you are not sure what lies beneath, please call 811. 811 is a free service that marks out underground utility lines, pipes, and cables. This way, you aren’t causing damage to any utility lines, which can disrupt service to an entire neighborhood, harm diggers, and potentially result in fines and repair costs. 811 will coordinate with local utility and service providers to mark underground lines based on a color code for easy interpretation.

## Other Simple and Effective Ways to Become More Energy Efficient

- Replace traditional lightbulbs with LED lightbulbs
- Change air filters regularly
- Have your HVAC system serviced
- Unplug unused appliances when not in use

## Scan for additional information on Vegetation Management and proper landscaping

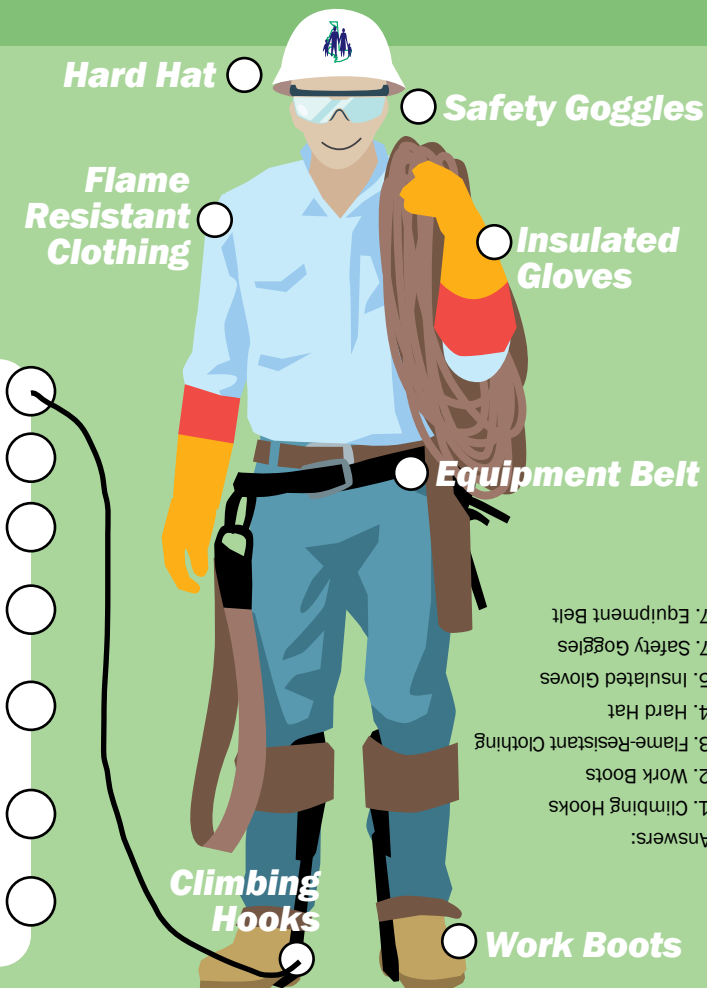




GEARED FOR SAFETY

Choptank Electric Co-op lineworkers wear special gear to help them stay safe on the job. Can you match the descriptions below to the correct safety equipment by drawing a line? Use the answer key to check your work!

- 1. These help lineworkers safely climb poles.
- 2. Provides extra protection while lineworkers work with heavy materials that could fall near their feet.
- 3. This material keeps lineworkers safe from electrical hazards.
- 4. This protects lineworkers from head injuries and falling debris.
- 5. These insulated protectors keep lineworkers safe from electrical shock while working on power lines.
- 6. These keep debris away from lineworkers' eyes while on the job.
- 7. This is a handy piece of safety gear that holds tools and other equipment.



- Answers:
- 1. Climbing Hooks
- 2. Work Boots
- 3. Flame-Resistant Clothing
- 4. Hard Hat
- 5. Insulated Gloves
- 7. Safety Goggles
- 7. Equipment Belt

Is Your Contact Info up to Date?

Don't Miss Out on Important Co-op Messages

Please make sure your current mailing address, email and phone number are on file for your Choptank Electric Cooperative account so you receive important communication about your power. Members will be notified by for:

- Planned Maintenance
- Outage Restoration
- Past-Due Bills
- Capital Credit Distribution
- Annual Member Meeting
- Scholarships and Youth Opportunities
- Energy Efficiency Tips and More!

Log in to SmartHub to update your profile or call our Member Service Center at 1-877-892-0001 Monday – Friday from 8am – 4pm to update your contact information.

If you want to sign up for outage communication via text message, the mobile number you wish to use must be the primary number associated with your account. Text



Call our Member Services Department to update your info. Habla español

the word “CHOPTANK” to 1-800-410-4790 to sign up for our Outage Communication service. Once signed up, use the following keywords to interact with the service:

- **OUT:** Report an outage at your location.
- **STATUS:** Get more info about an outage.
- **QUIT:** Opt out of outage notifications.
- **HELP:** Get help with your outage notifications.

Standard text message rates apply. Members must allow for 24 hours after the information has been updated and/or changed in our system before you can try to opt-in to our text messaging service.



Load Control Rider

Save money by reducing usage during peak periods

periods. Notice of control periods will be issued by Choptank Electric via text message (members may opt in through SmartHub) and our website under “Your Service”. There is no penalty for not controlling during the designated peak periods.

Load Control Rider (LC)

- Can be paired with Small Power (S), Medium Power (M), and Primary (P) rates
- Must have a curtailable load of at least 50kW

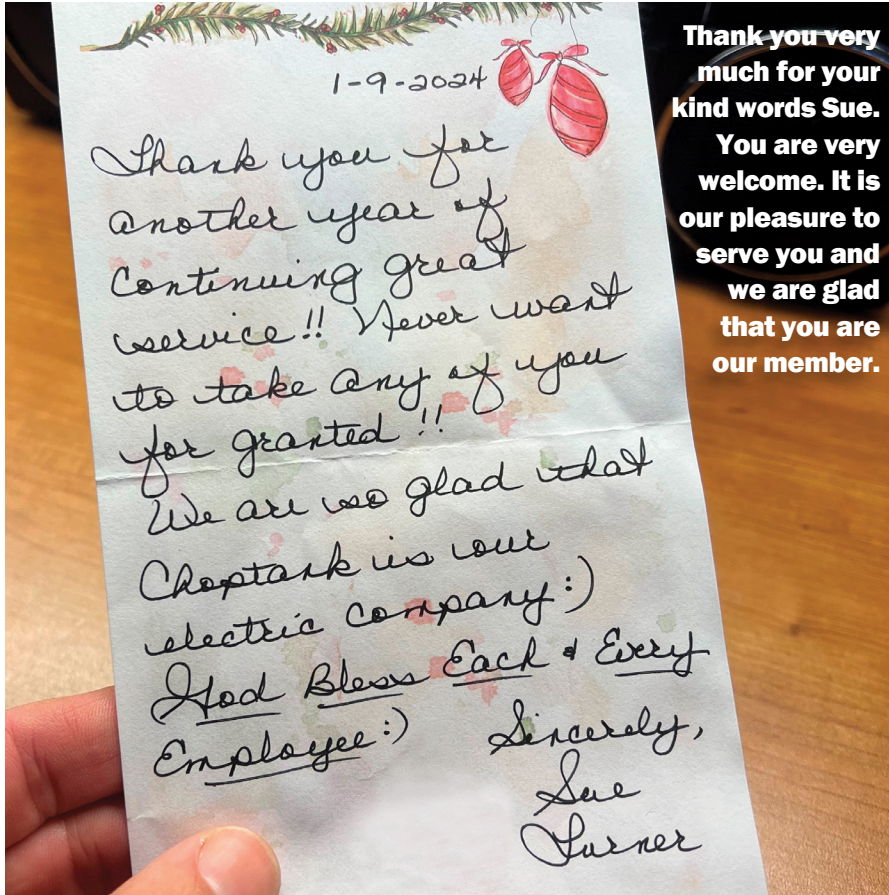
Load Control Rider – Irrigation (LC-FI)

- Can be paired only with General Service – Irrigation (FI) rate
- Must have a curtailable load of at least 25kW

If you would like to enroll in the Load Control Rider, give us a call at 877-892-0001.

## MEMBERS' NOTES

Our members are the reason Choptank Electric Cooperative exists. Whether on social media, by phone, or through handwritten letters, we appreciate when members let us know that we are doing a good job! **Thank you, all!**



## Choptank Electric Trust Awards



The Choptank Electric Trust is a 501(c)(3) charitable foundation funded by Operation Round Up donations from members of Choptank Electric. Funds from the Trust are distributed in all nine counties of MD's Eastern Shore.

To apply or to find out more about this program:

> [www.choptankelectric.coop/operation-round-trust-fund](http://www.choptankelectric.coop/operation-round-trust-fund)

### February 2024

- Bailey-Groce Family Foundation ..... \$4,000
- Caroline County Humane Society ..... \$3,000
- Community Civic League ..... \$2,100
- Maryland FFA Foundation ..... \$920

**The total of approved applications for February was \$24,411, which included \$17,117 for individual home and medical expenses.**



**Choptank Electric Cooperative**  
A Touchstone Energy Cooperative

### Choptank Electric Cooperative, Inc.

Choptank Electric, a Touchstone Energy Cooperative, is a not-for-profit, member-owned, electric distribution co-op serving approximately 56,000 residential, commercial and industrial members in all nine counties on Maryland's Eastern Shore.

#### President & CEO

Micheal E. Malandro

#### Board of Directors

Douglas D. Scott  
Chairman, Dorchester Co.

Robert E. Arnold  
Vice Chairman, Queen Anne's Co.

John J. Burke Jr.  
Treasurer, Cecil Co.

Matthew R. Holloway  
Secretary, Wicomico Co.

Amy I. Brandt  
Caroline Co.

Craig N. Mathies Sr.  
Somerset Co.

Kristen E. Nickerson  
Kent Co.

Jeffrey D. Rathell Sr.  
Talbot Co.

Robert B. Thompson  
Ocean Pines District

Donna R. West  
Worcester Co.

**Choptank Fiber**

#### Choptank Fiber, LLC

Choptank Fiber, LLC, is a wholly owned broadband subsidiary of Choptank Electric Cooperative. Choptank Fiber's goal is to install true gigabit broadband with no data caps one community at a time until we serve all our members on the Eastern Shore.